



## Kingsbridge Drive

**£2,300 Per Month**

Cosway Estates are pleased to offer for rent this lovely well presented three bedroom terraced house situated in the highly sought after Lidbury Square Development in Mill Hill, moments from the Waitrose supermarket, Virgin Active Gym, schools and Mill Hill East Underground station. This property comprises of a spacious reception room; large kitchen/diner; three bedrooms; family bathroom and downstairs WC. This property also benefits from having a rear garden and two allocated parking spaces. AVAILABLE NOW. VIEWINGS HIGHLY ADVISED.

### Viewing

Please contact our Mill Hill Office on 02089590011 if you wish to arrange a viewing appointment for this property or require further information.



3



1

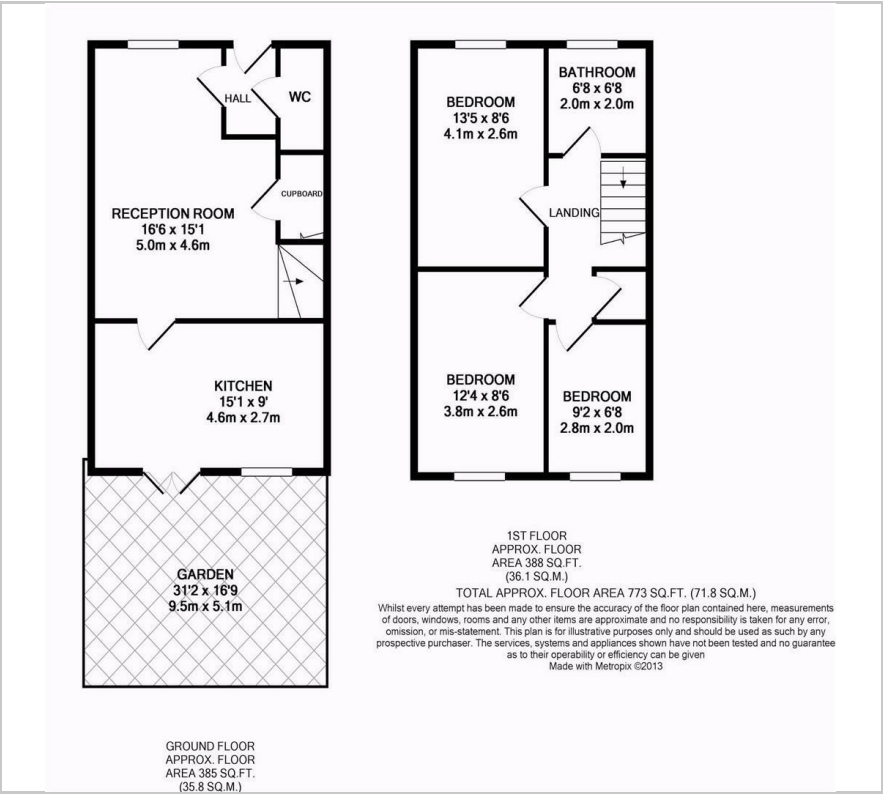


1





Floor Plan



Area Map



Energy Efficiency Graph



These particulars, whilst believed to be accurate are set out as a general outline only for guidance and do not constitute any part of an offer or contract. Intending purchasers should not rely on them as statements of representation of fact, but must satisfy themselves by inspection or otherwise as to their accuracy. No person in this firms employment has the authority to make or give any representation or warranty in respect of the property.